



ADTO



GURKHAS

ADTO-GURKHAS GROUP SCAFFOLDING SYSTEM





ADTO

HISTORY OF THE ADTO GROUP

- ADTO GROUP, founded in 1998, is one of the largest steel tube & scaffolding R&D, manufacturing and trading group company in China. The company has taken the construction of many major projects in China mainland under cooperating with China Construction, MCC China and Hunan Construction Engineering Group. After 15 years' development, the group now has 8 subsidiaries and 4 manufacturing plants.

Courtesy of www.adtoscaffold.com



GURKHAS

HISTORY OF THE GURKHAS GROUP

- The Gurkhas Group was established in 1997 with its core business in the Construction sector. The company has currently partnered with several Hong Kong and Foreign contractors, in both public and private sector. Due to a high demand, the company has expanded its services in Nepal, China, and Malaysia to provide Construction, Security, Cleaning and Recruitment Services. As our Chairman was formerly a member of the British Gurkhas, the majority of our direct staffs are Ex-Gurkhas and Nepalese Hong Kong identity card holders who have a disciplined and regimented background. This provides a ready workforce for tasks that require diligent and efficient undertaking.

Courtesy of www.gurkhasgroup.com



ADTO-GURKHAS GROUP SCAFFOLDING SYSTEM

- The scaffolding division of ADTO Group Corporation integrates the designing and manufacturing with sales and service of various scaffolding products, while focusing on the scaffolding market both at home and abroad, it aims at providing customers the safest and most competitive products. ADTO scaffolding division products range from ringlock scaffolding and shoring system, tubular & fitting system, frame system, cuplock system, kwickstage system, steel boards, adjustable props to base jack and all scaffolding series.
- Not only does it hold many national patents, but also its many products has been judged as the highly recommended products in scaffolding industry as well as star products. And its screw rod has passed the JIS certification and been a leading position.
- With products all over the major domestic markets, it has developed greater cooperation with the world's leading chemical company BASF, even becoming the designated supplier of construction companies of China Petrochemical Corporation. It has more than 5000 international customers, which can be found all over such 50 countries and areas as Southeast Asia, Middle east, Europe, America, Africa and the Oceania.



Jack-base



GI scaffolding tube



Frame Scaffolding



Scaffolding Tube



Steel Prop



Scaffolding Ladder Beam



ADTO Cuplock



Ringlock Scaffolding

ALL PRODUCTS
ARE TESTED WITH
CERTIFICATION
FROM REPUTABLE
ORGANIZATION





PRODUCT MANUAL

WHOLE SCAFFOLDING & FORMWORK SYSTEM (DESIGN) SERVICE SUPPLIER

QUALITY BUILDS FUTURE



WHOLE SCAFFOLDING & FORMWORK SYSTEM (DESIGN) SERVICE SUPPLIER

HUNAN ADTO BUILDING MATERIALS GROUP CO., LTD.
HEADQUARTERS:
#F, 11F, 15F, 16F, 18F, MINGCHENG INTL BLDG, CHANGSHA CITY, CHINA
TEL: 86-731-8866 0581 / 8866 0564 / 8866 0573 / 8866 0572

30 PAGES MANUAL OF ALL PRODUCTS





Malaysia OM Ferroalloys Projects



Sinopec CTL Project



Chinese Nuclear Project



Xiang River Music Festival Project



ChangSha International Convention Centre Project



PetroChina Project in YunNan



Russian Natural Gas Project



ZheJiang Power Plant Project



ADTO GROUP
HAS AN
EXTENSIVE LIST
OF PROJECT
REFERENCES





元拓集团
YUANTUO GROUP



British Pressed Double Coupler
48.3mm/0.83-0.87kg



British Pressed Swivel Coupler
48.3mm/1.02-1.05kg



British Sleeve Coupler
48.3mm/1.0kg



Pressed Putlog Coupler
48.3mm/0.62kg



110° Pressed Swivel Coupler
48.6mm/0.58-0.65kg



110° Pressed Double Coupler
48.6mm/0.58-0.65kg



90° Pressed Swivel Coupler
48.6mm/0.59-0.65kg



90° Pressed Double Coupler
48.6mm/0.59-0.65kg



EXAMPLE PRODUCTS



PROVED THEIR EXCELLENCE WITHIN CHINA

- Based on 15 years' international market operating experiences, the company now owns nearly 50 subsidiaries, 2000 professional employees, and over 5000 partners at home and abroad, with a sales network extending across 170 countries and districts.



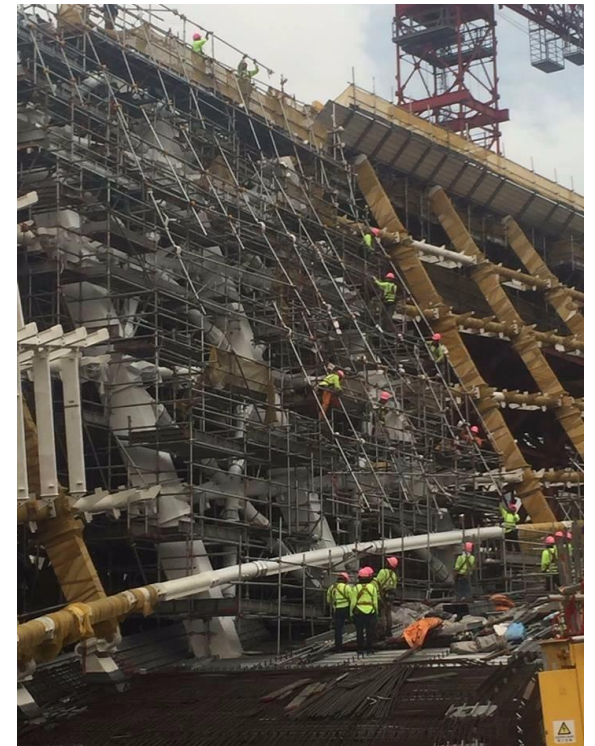
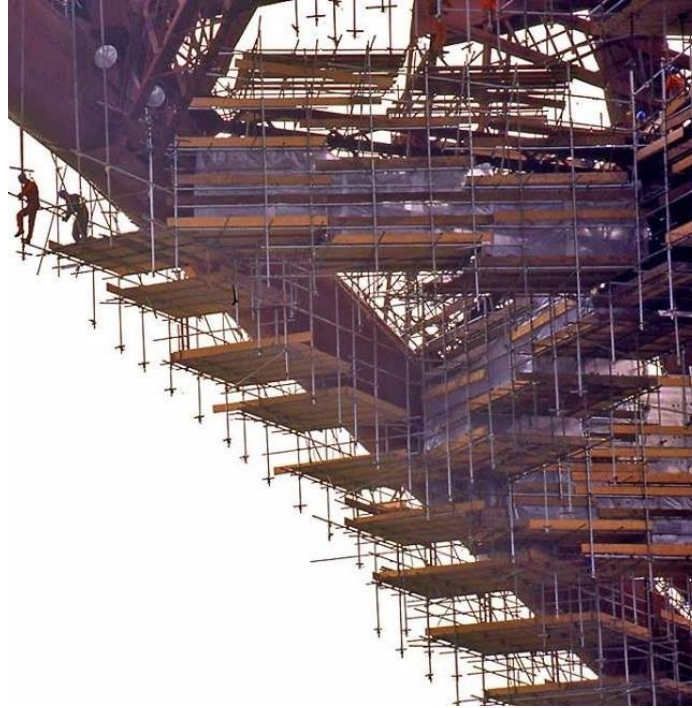
WORKING WITH ADTO GROUP

- GCL has an extensive number of labour supply in our database
- Sole installers of ADTO Scaffolding in Hong Kong



GCL SCAFFOLDING EXPERIENCE

- PERI scaffolding system with 810A
- Our client: LGJV
- Scaffolding
- Labour Supply of 100 people



GCL SCAFFOLDING EXPERIENCE

- Victoria Peak Galleria
- Installation RMD Kwik form scaffoldings





STAY IN TOUCH
WITH US

Location

Workshop B, 11th Floor, Ford
Glory Plaza, No. 37-39 Wing
Hong Street, Cheung Sha
Wan, Kowloon, Hong Kong

Contact

GURUNG Minita

Sales and Marketing Executive
minita.gurung@gurkhasgroup.com
Tel: 3595 6502