



Gurkhas Construction Limited

Fixing Of Rebar



Gurkhas Construction Limited

Vision on Rebar Fixing Industry

Based on the current Hong Kong situation in the steel rebar fixing, the majority of the skilled workers in this field are the local Chinese of Hong Kong. However, these skilled workers are now getting older. These older workers can be less nimble they trip, fall, easily injure themselves, when older it's very easy to injure the back. Therefore, GCL is positioned to offer Nepali HKID holders who are working in this field since 1990's. The population of the Nepal people In Hong Kong is 25,000, some 5,000 work in the construction sector in 2021

In 2021 less and less Cantonese younger men, have any interest to develop their skills and build a trade like a steel fixer. The supply chain is now different in the 2020's. Now **OFF SITE** plants will do the cutting and bending of the rebar, this follows the way its done in Singapore.. In the period to 2025, this will become the dominant method of supply, like Singapore and other developed Asian construction markets. The future is all about OFF SITE, GCL is positioned for that change.





Gurkhas Construction Limited



The OFF SITE cut and bend plant is designed to move bars fast, with the minimum amount of manual handling of the rebars.

Steel rebars on the truck ready for delivery to site.

Bad labelling of steel rebar. This cardboard label in the picture will fall off after rain. It does not show the exact location where the bent rebars are to be fixed. Accurate steel rebar fixing requires a tear proof, waterproof label. The more information on the label, the less chance of steel fixing errors, and. Labels also can be color coded, so all steel rebar to be fixed on say the “west wing” of a cruciform block can be clearly identified. This cardboard label is from the 1960’s

The label in the bottom left has a detailed bar code, its fully traceable back to the heat and cast number. It also has all the detailed information where it will be fixed. This is the way in 2021





Gurkhas Construction Limited

We specialize on Rebar Fixing, Post Tensioning and all types of Steel Fixing.





Gurkhas Construction Limited

On-Site Safety Precaution Measures

Pinpoint those high risk areas for steel fixers. GCL analyse the causes of each small accident and establish corresponding safety precaution measures to prevent it occurring again. Through detail planning, training induction, implement planned safety precaution measures on site, supervision system and review regularly, those accidents and injuries can be avoided or at least reduced considerably. Safety is in the DNA of GCL.



Keep the working area clear, clean and access free of barrier.



Use of proper working platform.



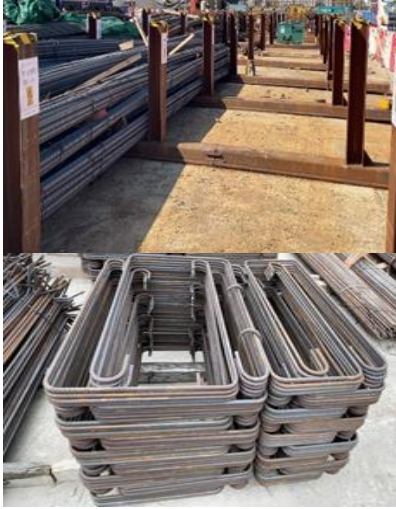
Using plastic capping to cap the rebar sharp edges or bend the rebar.





Gurkhas Construction Limited

On-Site Safety Precaution Measures



Provide identified rebar storage area.



Training and supervising safety lifting operations.



Precaution measures to prevent heat stroke such as provide drinking water point, resting area, etc.



Gurkhas Construction Limited

Completion Photos: Terminal 2 - Infrastructure





Gurkhas Construction Limited

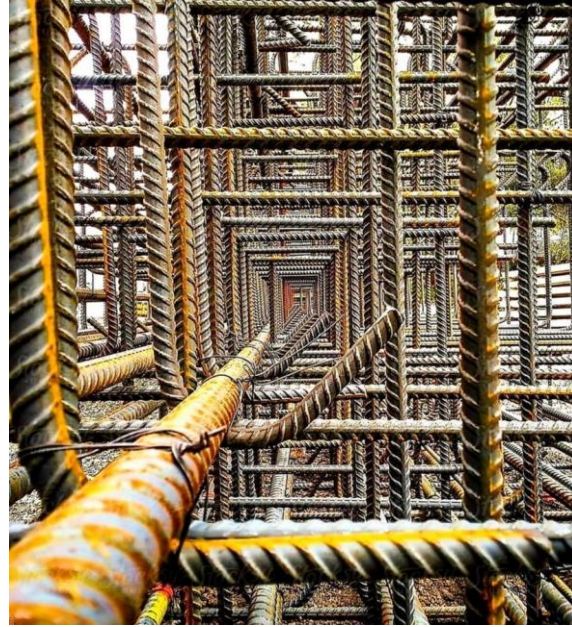
Completion Photos: Terminal 2 - Infrastructure





Gurkhas Construction Limited

Completion Photos: Hong Kong-Zhuhai-Macau Bridge



GCL has been both the steel fixer and prestressing installer and contractor on some of the most high profile projects in Hong Kong.